

Find out more about **cercon** smart ceramics.

Just click:

www.cercon-smart-ceramics.com

(including lab addresses) or further material by
fax +49 180/59 55 51

Zirconia, zirconium (di)oxide,
zirconia all-ceramics

***Rp.* Cercon**

- Processing system
- Framework ceramics
- Veneering ceramics
- Pressable ceramics

**Cercon smart ceramics –
the zirconia all-ceramic solution**

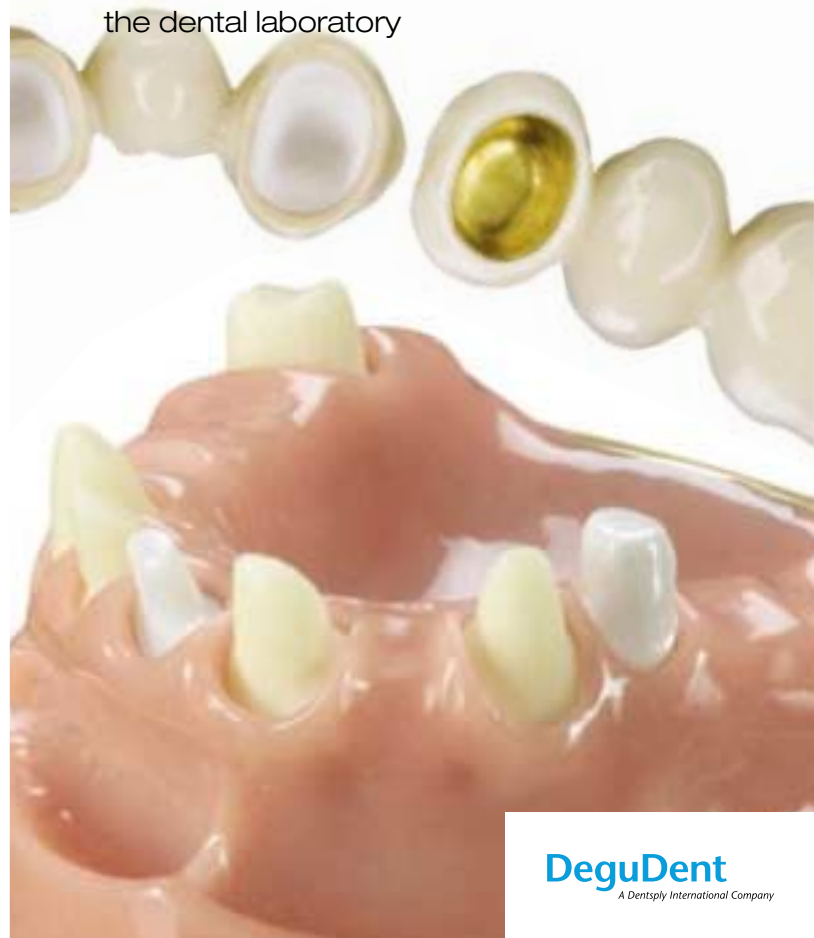
DeguDent GmbH
P.O. Box 13 64 · 63403 Hanau
GERMANY
www.degudent.com

DeguDent
A Dentsply International Company

28093/05/05/DMR

cercon smart ceramics®

Information for the dentist office and
the dental laboratory



DeguDent
A Dentsply International Company



We are not yet able to approve all requests for new indications, since these must first be supported by reliable studies, a process currently under way. As with so many products, dental technology is the driving force behind innovation, and this is certainly true of zirconia all-ceramics.

First of all: Thank you!

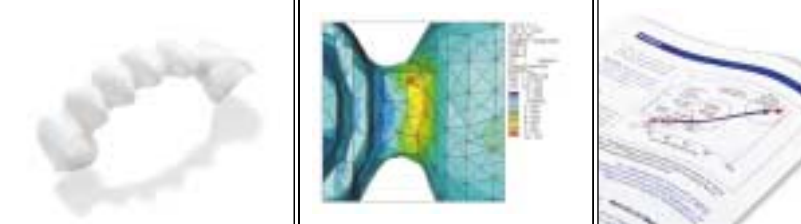
Since Cercon smart ceramics® was introduced in December 2001, more than 600 systems have been taken into use all over the world. During that time, more than 500,000 units were produced from our Cercon base zirconia material.

We would like to thank all patients, dentists and dental technicians for the confidence they have shown us and continue to show us, as these impressive figures suggest. The Cercon system is a convincing system and quickly got a good name in the market. The Cercon procedure has become established for a broad range of indications thanks to the nearly unlimited options it offers for creative design at the dental laboratory.

And another thing to be pleased about: Some other manufacturers have adopted our CAM process and the method of milling pre-sintered zirconia. This again confirms that the Cercon smart ceramics system drives the entire zirconia all-ceramics market, and you as a Cercon user are contributing to this development.

In the little brochure that you have in front of you, we have compiled the most current and the most important information on our system. But we would prefer to talk to you in person and show you the world of possibilities Cercon® gives you, specifically for your own laboratory. We will be happy to serve you.






seeking dental treatment. Patients are willing to pay extra for service and quality for “new teeth” that perform beyond what the standard health plan provides for.

When desires become potential realities

There is no doubt that quality dental restorations continue to be feasible using other materials. And there is no questioning the aesthetic results that can be obtained.

Yet, more and more we are facing patients who want metal-free restorations for themselves – whether because of incompatibilities or aversions or simply because they simply want to minimize the residual risk. Cercon lets you fulfil these patients’ wishes. 

Our reports, advertisements, and TV clips in various media of general interest have reached out to many potential patients and shown us several important things: Patients want to be informed of different therapeutic options when





CAM or CAD/CAM – still a question?

That even a “CAM only” system has its advantages is convincingly proven by Cercon every single day. But it is gratifying to learn that even this system still has the potential for upgrades that add real value. With **Cercon design**, we are offering a CAD module, initially for designing single-tooth crown frameworks that are then milled using the Cercon brain unit.

Since the “simple” geometric tooth shapes can be quickly designed on the screen, it is only natural for us to offer you that option. The **Cercon move** component, our innovative navigation unit, lets you continue to keep the object under your own control.

As you have come to expect from DeguDent, our Cercon design module sticks to the principle that every single part of the Cercon system must be uncomplicated and easy to operate. A user interface with a clear structure, process steps that are simple to follow and a milling strategy developed for fast and precise results are only some of the characteristics of the Cercon design module.

Customized wax modellation offers advantages and variety which will never be duplicated by any “design library”, no matter how extensive. It is these advantages that we have begun to complement with a virtual design/modellation environment, Cercon design. Even the basic version is an ideal supplement for our “classic” Cercon system.





As always with DeguDent, safety considerations are our foremost concern. Thanks to our exacting production standards, Cercon base colored will always offer you the same high quality, blank by blank by blank. No extra effort is required for manual coloring.

Enter ... color!

Cercon base zirconia blanks present themselves in the white color of noble porcelain. But even if this most perfect of all colors makes its advantages felt in many tasks, it also has its limits, such as when reproducing tooth color in areas where the veneering layer must remain thin.

Cercon base colored – zirconia blanks with an ivory color – offers an excellent baseline color supporting a splendid veneering result with formidable aesthetics. The same color is excellently suited for zirconia primary crowns.





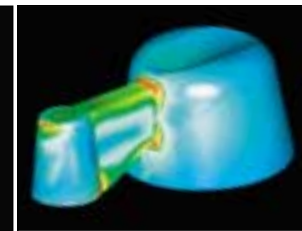
In situations in which abutments diverge, the **Cercon link** construction element will assist you in creating bridges of up to 47 mm in anatomical length. Until we have completed our loading studies, you will be on the safe side by using Cercon link for linking no more than two pontics.

Size XXL dental restorations

The **Cercon base 47** zirconia base will bridge a lot of gaps. Six or seven units (with two pontics in a row) in the anterior or posterior region should pose no problems even with extensive dental arches. The **Cercon brain** will gladly accept and mill this XXL blank and process it at a speed that will even keep your cost accountant happy.

In their **sintering bed**, these objects are perfectly accommodated by the **Cercon heat** unit (which of course is equally suitable for smaller units).

This construction element was specially designed to make the most of the excellent material specifications of zirconia, using the fine-element method. Utilize the entire width of Cercon link. You have adaptation options from basally along its height.

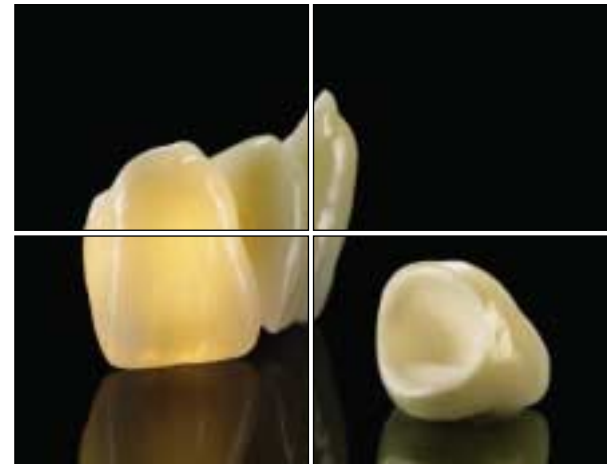




- Developed especially and exclusively for veneering Cerconoxide frameworks.
- Economical to work with: You can cover a broad color spectrum by combining just a few powders.
- All types of teeth can be reliably reconstructed – from young people's teeth to “old teeth”.

Attention paid to aesthetics: Cercon ceram kiss

The veneering ceramics complement the system perfectly. The high level of acceptance among patients is attributable primarily to the aesthetic appearance of a full-ceramic restoration. To ensure that you can achieve this desirable result easily and reliably, particular importance is attached to matching the individual powders to one another. The guiding principle of the system applies here too: Every wish is catered for with **Cercon ceram kiss**, the new veneering ceramic.





Build-up technique was yesterday, Cercon ceram express is today...

...well, things are certainly not quite that way. And the ceramic build-up technique with its excellent aesthetic results will be around for a long time.

On the other hand, **Cercon ceram express** has the potential of expanding your range of all-ceramic offerings: pressed posterior zirconia frameworks with stained tooth color, the so-called press-and-stain technique. Or take the anterior region with a layered veneer using the cut-back technique.

This procedure is also most suitable for precise shoulders, inlays or inlay bridges, partial crowns and implant superstructures. You will be excited how quickly you will discover the perfect and economically promising application for pressable ceramics for your own laboratory.

Cercon ceram express comes in two versions: Use the translucent anterior pellets for the anterior region for which you prepare the framework with a suitable liner before pressing. Use the more opaque posterior pellets for the posterior region. These pellets are pressed directly onto the zirconia framework.





Like hardly any other manufacturer, we have invested and continue to invest in clinical research around this system. For the same reasons we like to support dental offices with a broad range of informative materials.

Everything has its time

The past forty years were the heydays of the porcelain fused to metal restoration. The coming decades will be the time of zirconia.

We fully understand that this new system is most closely scrutinized where it is supposed to be used, namely in the dental office, the “point of sale”. What will the clinical picture be like in the long term? DeguDent has addressed this point ever since we began to develop Cercon smart ceramics.

We will be happy to supply to you, free of charge:

- Cercon smart ceramics brochure
- Clinical Manual
- Scientific results
- Posters for the dental office





Our offer for patients, dentists, and dental laboratories



A smart solution for an innovative material: Cercon smart ceramics – the zirconium oxide full-ceramic system.	
Framework material	Zirconium oxide <ul style="list-style-type: none"> • Cercon base (white) • Cercon base colored (ivory)
Veneering ceramic	Cercon® ceram kiss Cercon® ceram express
Coloring	Using layering or painting techniques
Indications in the anterior and posterior tooth region	<ul style="list-style-type: none"> • Primary telescope crowns • Crowns • Multi-unit bridges with a max. anatomical length of 47 mm (intermediate units between the abutment crowns) • Inlay bridges
Contraindications	Bruxism and therapy-resistant parafunctions
Temporary fixing	Possible
Definitive fixing	By means of conventional cementation or adhesive bonding techniques

Please send us the following information:

Number of copies

- Image brochure
- Clinical Manual
- Scientific results
- Posters for the dental office
- Cercon smart ceramics – Instructions for Use
- Cercon ceram kiss – Instructions for Use
- Cercon ceram express – Instructions for Use

Please contact me regarding consultations, training, professional development

_____	_____
Laboratory/office	Postal code and city
_____	_____
Family name and given name	Phone
_____	_____
Function	Fax
_____	_____
Street address	E-mail