

Cercon[®] brain

cercon
smart ceramics[®]

Cercon art 1.1 Instructions for Use

Cercon smart ceramics –
zirconia all-ceramic system

DeguDent
A Dentsply International Company

Purpose

- Cercon® art comprises a range of hardware and software products developed for the virtual design of dental crowns and bridges at the dental laboratory only.
- Cercon art must be used only for those indications for which it has been approved in the most recent Cercon documentation.

Contraindications

- Cercon art is not suitable for any applications other than those described in the Cercon art and Cercon brain Instructions for Use.

Warnings

- The local laws and regulations related to work with display screen equipment must be followed when working with Cercon art.
- Cercon art units are electrical devices with electrical connectors essential to their function. These electrical connectors must conform to local laws and regulations. They may not be modified by the operator.
- Modifications of system components may constitute a direct safety hazard and are therefore prohibited. In addition to the direct safety hazard, indirect hazards may occur, including errors in the dental restorations produced with Cercon art.
- Frameworks produced with Cercon art and Cercon brain must be checked for correct fit on the plaster model before intraoral trial in.

Precautions

- The safety instructions preceding the Instructions for Use include cautions and warnings for safe operation.
- Make sure to observe the safety instructions in the Instructions for Use of the various Cercon art units and the pertinent additional documentation.

Manufacturer:

DeguDent GmbH
Rodenbacher Chaussee 4
D-63457 Hanau
Phone +49 61 81 59 57 59
Fax +49 61 81 59 59 62
www.degudent.com

© June 2005 (1.1) by DeguDent GmbH

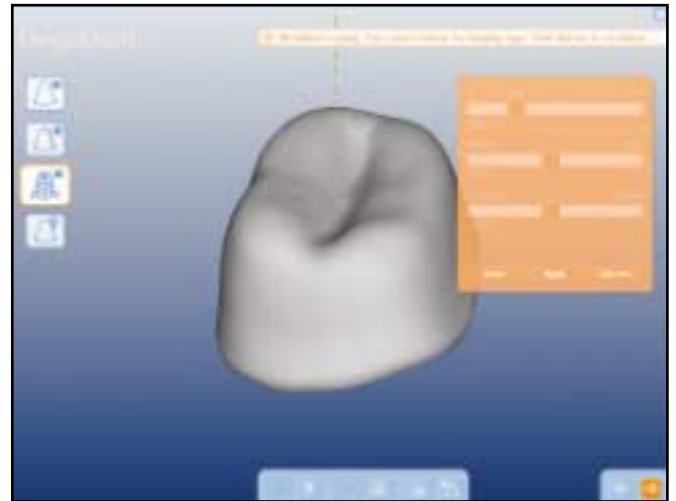
These Instructions for Use are a supplement to your Cercon art Instructions for Use. It describes functions that are available to you after updating your PC to Cercon art software version 1.1.

Please note that the cautions and warnings for safe operation in the Cercon art Instructions for Use and in the Instructions for Use for the respective components must be observed for these functions as well.

For flat preparations or short dies the coping wall thickness has to be built up locally in order to achieve an even veneering layer thickness and withstand lateral chewing forces.

Now, with the new surface tool, which we have included after calculation of the coping, it is possible to make those occlusal adjustments.

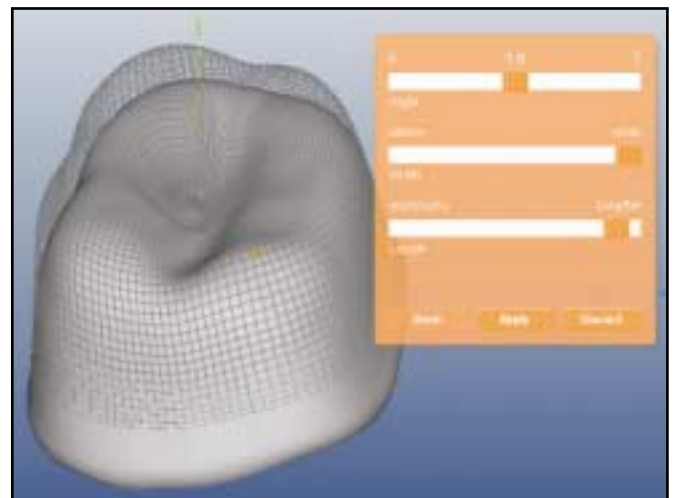
The coping surface can be built up in as many steps as required.



To use the tool click on the coping surface where you want the centre of the local thickening to be. Use the 3 scrollbars for shaping the added geometry which is displayed as a mesh over the existing surface.

If you click somewhere near the coping centre geometry will be added centrally and you adjust its height, width and shape.

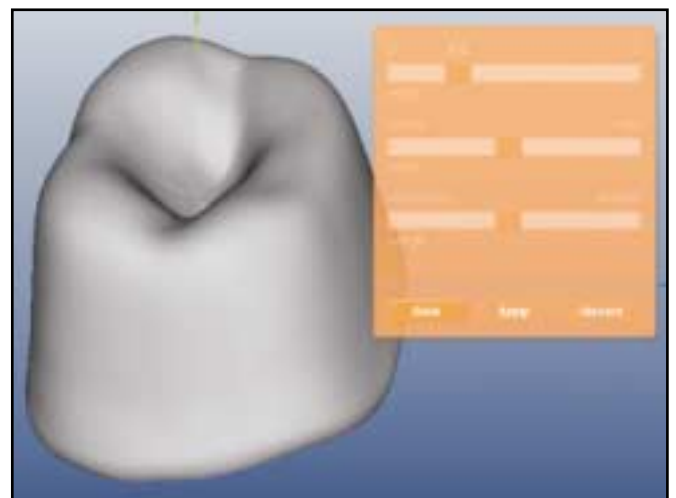
To raise a single cusp or design a ring shape as shown click outside the centre area which is indicated by an orange ring.



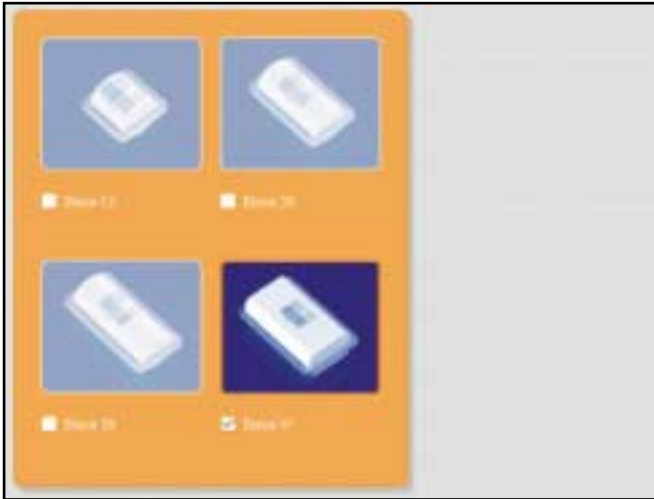
With the “Apply” button you incorporate the new shape into the coping surface. The mesh turns into a shaded display.

Should your local build-up go wrong somewhere you can always go back stepwise using the “Back” button and make changes.

A short demo film showing in some examples how to use the surface tool can be downloaded from the Cercon website.



2 Nesting



Virtually placing several objects into one blank for milling is called “Nesting”. You can use all 4 blank sizes base 12, 30, 38 and 47 for nesting.

After selecting your local Cercon brain as the milling location you will be asked to choose the blank size as shown.



Next the selected blank type is displayed on the left alongside the list of saved cases.

To select copings for nesting just click on the cases in the list. The copings will be virtually placed in the blank in such a way that they use minimal space. A simplified representation of each coping appears in the blank area.



Depending on their size 3–4 copings can be nested into a base 30 blank, 4–6 into a base 38 and 10–12 into a base 47.

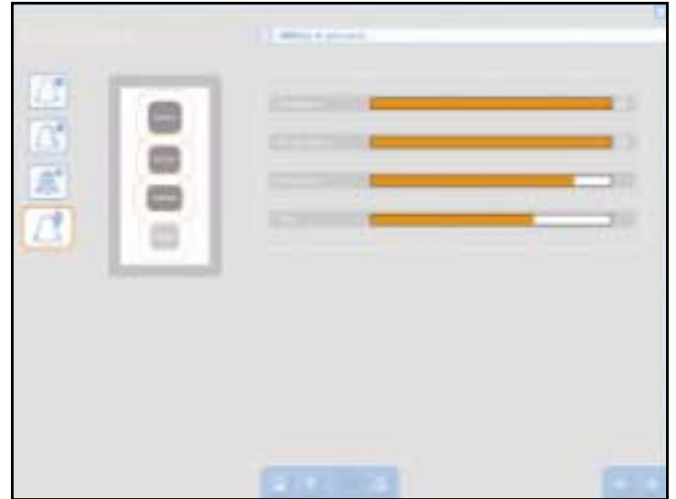
You can modify the order of copings by removing and inserting copings and thereby achieve an optimal use of each blank.

The perforated membrane holding each coping individually which has proven itself for milling single CAD copings is also used for nested cases. This connection can easily be removed using sandblasting.

3 Milling progress

Milling progress is now displayed for each coping showing bars for calculation, rough milling and fine milling. The bottom bar shows the overall progress for the complete blank.

As an additional visualization all copings that are finished or being milled are displayed dark gray while the ones to be milled appear in light gray.



4 Further improvements

You can sort cases according to each of the column headers in the list. To display all cases by a column in ascending order just click on its header.

Case no.	Type	Dentist	Operator	Case saved	Status
100552	27c	Dr. Zahn	Hinz	05.05.27 15:54	Milled
100551	11c	Dr. Best	Peter	05.06.14 16:59	Milled
100550	11c	Dr. Best	Peter	05.05.27 15:53	Milled
100549	14c	Dr. Zahn	Kanz	05.06.14 16:59	Milled
100548	44c	Dr. Best	Hinz	05.05.27 15:52	Milled
100547	23c	Dr. Best	Schmidt	05.06.14 16:59	Milled
100546	13c	Dr. Best	Schmidt	05.06.14 16:59	Milled
100545	16c	Dr. Best	Schmidt	05.05.27 15:47	Milled
100544	14c	Dr. Best	Schmidt	05.05.27 15:47	Milled
100543	13c	Dr. Zahn	Müller	05.05.27 15:46	Milled
100542	16c	Dr. Zahn	Müller	05.05.27 15:46	Milled
100541	13c	Dr. Zahn	Müller	05.05.27 15:45	CAD
100540	47c	Dr. Zahn	Müller	05.05.27 15:44	Milled

An “Auto Complete” function simplifies the input of re-occurring names of patients, dentists or operators. Once you type a letter the program suggests how to complete it if names beginning with that letter have previously been saved.



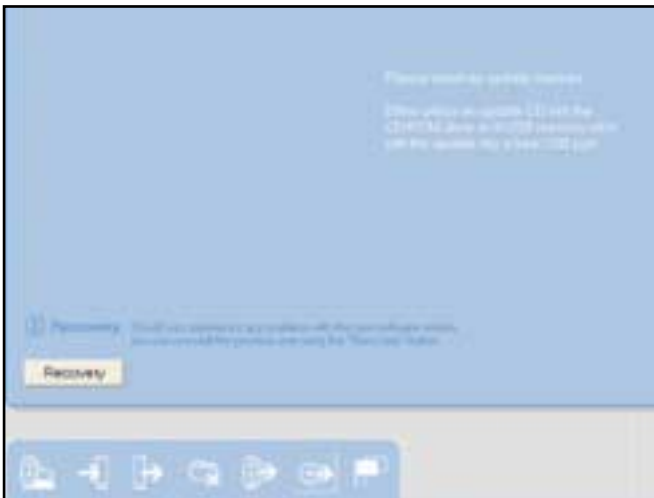
5 Cercon tools



The supporting application Cercon tools has a new user interface. The functionality is unchanged: Internet setup, saving to and reading from USB memory, file deletion and remote software update via Internet work the same way as before.

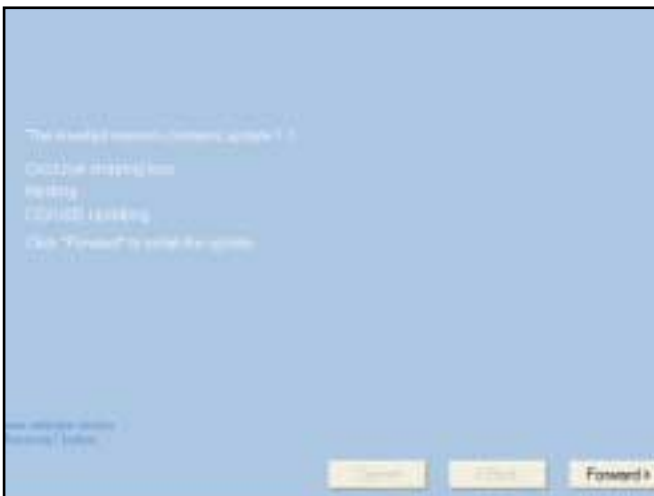
The old text buttons on the left have been replaced by icons at the bottom. If necessary use their tool tips for clarification.

5.1 Software update from CD or USB memory



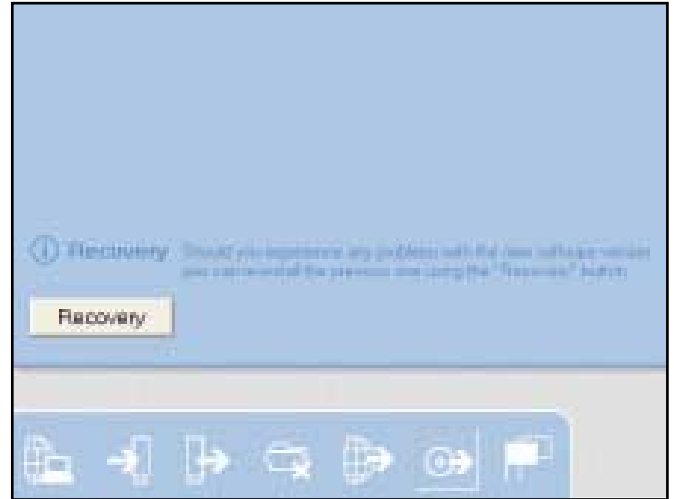
In addition to downloading software updates via the Internet, which was introduced in the previous version, you can now also update your software locally using a CD or a USB memory stick.

For software updates this makes you independent from an Internet connection.



After inserting a CD or USB memory stick containing the update the software first determines the update version and its features. If it is newer than the version on the PC the update can be installed using the "Forward" button. Usually the installation takes only a few seconds time.

Should any problems occur after the installation of an update the previous version can be re-installed using the “Recovery” button.



Another new feature of Cercon tools is the language selection for the software. Currently there are two English versions (UK and US) available as well as German. Several other languages will be introduced soon.

5.2 Language selection



For further information:
www.cercon-smart-ceramics.com

cercon
smart ceramics®